

KEY INVESTOR INFORMATION						
This document provides you with key investor information about this fund. It is not marketing material. The information is required by law to help you understand the nature and the risks of investing in this fund. You are advised to read it so you can make an informed decision about whether to invest.						
Class B USD Manager Shares of Leadenhall UCITS ILS Fund Plc (the “Fund”) ISIN: IE00BNK9SV44 The Fund is managed by Waystone Management Company (IE) Limited (the “Manager”)						
Objectives and Investment Policy						
<p>The Fund’s objective is to achieve absolute return for investors.</p> <p>The Fund will invest primarily in catastrophe bonds and other securities, payments on which are linked to insurance payouts as a result of natural or non-natural catastrophic events. These include earthquakes and windstorms, and other mortality and catastrophe-related events.</p> <p>The Fund may also invest in liquid assets and retain a proportion of its assets in cash and deposits.</p> <p>The Fund may use futures and options relating to weather or insurance indices for investment purposes and for the purpose of hedging risks.</p> <p>The Fund may be leveraged up to 100% of its net asset value.</p>				<p>The Fund is actively managed without reference to an index and the investment manager of the Fund has discretion to manage the Fund in line with its investment restrictions.</p> <p>The Fund measures performance relative to the no-loss gross return of Cash + 7.25% per annum. This figure assumes no losses. The expected loss guidance per annum is 2% to 3%.</p> <p>The minimum initial subscription is US\$5,000,000 (or staff investment) and the minimum subsequent subscription is US\$1,000,000 (or staff investment).</p> <p>Investors can buy and sell shares on at least two occasions per calendar month.</p> <p>Income generated by the Fund will be re-invested and reflected in the price of shares in the Fund.</p> <p>Transaction costs associated with investments in the Fund may have a material impact on the performance of the Fund.</p>		
Risk and Reward Profile						
<p>Lower risk <span style="float: right;">Higher risk</span></p> <p>← Typically lower rewards      Typically higher rewards →</p>				<p>Below are the risks that you should be aware of that may result in a loss or reduction in the value of your investments. These risks are not exhaustive. Potential investors should consult the prospectus and their professional advisers before investing in the Fund.</p>		
1	2	3	4	5	6	7
<ul style="list-style-type: none"><li>• This indicator is based on the historical performance of the Fund and may not be a reliable indication of the future risk profile of the Fund.</li><li>• The risk category shown is not guaranteed and may shift over time.</li><li>• The lowest category does not mean “risk free”.</li><li>• The Fund is rated, in accordance with the applicable calculation methodology, as category 4 and is therefore rated as having a low to medium risk return profile due to the historical performance of the Fund and the various risks that the investments of the Fund may be exposed to.</li></ul>				<p><b>Market Risk:</b> Investments are subject to normal market fluctuations and the risks inherent in investment in international securities markets.</p> <p><b>Liquidity Risk:</b> Risk of holding assets that cannot be easily traded in the market.</p> <p><b>Counterparty Risk:</b> Risk of material investment exposure through contracts with a third party.</p> <p><b>Currency Risk:</b> Fund assets in currencies other than the base currency of the Fund may expose the Fund to a loss if the currency of those assets falls relative to the base currency of the Fund.</p> <p><b>Derivatives Risk:</b> The use of derivative instruments by the Fund can potentially increase the volatility of the Fund by increasing its sensitivity to market and counterparty risk.</p>		

## Charges for this Fund

The charges you pay are used to pay the costs of the Fund, including the costs of marketing and distributing it. These charges reduce the potential growth of your investment.

One-off charges taken before or after you invest:

**Entry Charge** 0%

**Exit Charge** 0%

This is the maximum amount that might be taken out of your money before it is invested or before the proceeds are paid out. An anti-dilution levy may also be payable in order to cover the costs associated with subscriptions and redemptions in the Fund.

Charges taken from the Fund over a year:

**Ongoing Charges** 0.20%

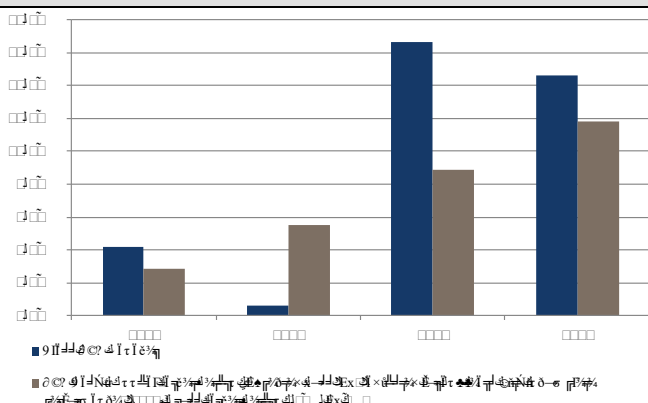
Charges taken from the Fund under certain specific conditions:

**Performance Fee** None

The **ongoing charges** figure shown here is an estimate of the charges. This figure may vary from year to year. The UCITS' annual report for each financial year will include detail on the exact charges made.

For more information about charges, please see the section of the Fund's prospectus headed "*Fees and Expenses*", which is available at [www.leadenhallcp.com](http://www.leadenhallcp.com).

## Past Performance



- Past performance is not a guide to future performance
- Performance shown is net of fees
- Performance shown is in relation to the class and currency of shares to which this document relates
- Performance is calculated as the percentage increase of the net asset value per share of the share class during the observation period. Valuation Days for the Fund are the 2nd Friday and last Business Day in each month. The performance chart shows the net asset value performance up to the nearest Valuation Day to the month end.
- The Fund launched on 21 December 2015 and this share class launched on 12 February 2020.

## Practical Information

The Fund's assets are held through its depositary, which is U.S. Bank Europe Designated Activity Company (t/a U.S. Bank Depositary Services).

Further information about the Fund (including the current prospectus and net asset value per share of the Fund) is available at [www.leadenhallcp.com](http://www.leadenhallcp.com). Details of the Manager's remuneration policy are available at <https://www.waystone.com/waystone-policies/> or alternatively a paper copy will be made available free of charge upon request.

The Fund is subject to Irish taxation legislation, which may have an impact on your personal tax position as an investor in the Fund. Investors should consult their own tax advisers before investing in the Fund. Waystone Management Company (IE) Limited may be held liable solely on the basis of any statement contained in this document that is misleading, inaccurate or inconsistent with the relevant parts of the prospectus for the Fund.

Notice to Swiss Residents: The state of the origin of the Fund is Ireland. This document may only be offered in Switzerland to qualified investors within the meaning of art. 10 para. 3 and 3ter CISA. In Switzerland, the representative is ACOLIN Fund Services AG, Leutschenbachstrasse 50, CH-8050 Zurich, whilst the paying agent is NPB Neue Privat Bank AG, Limmatquai 1/am Bellevue, P.O. Box, CH-8024 Zurich. The basic documents of the Fund as well as the annual and, if applicable, semi-annual report may be obtained free of charge from the representative. In respect of the shares offered in or from Switzerland, the place of performance and jurisdiction is at the registered office of the representative. This document provides the investors with key investor information. It is not marketing material.

**The Fund is authorised in Ireland and regulated by the Central Bank of Ireland. Waystone Management Company (IE) Limited is authorised in Ireland and regulated by the Central Bank of Ireland. This key investor information is accurate as at 25 March 2025.**

